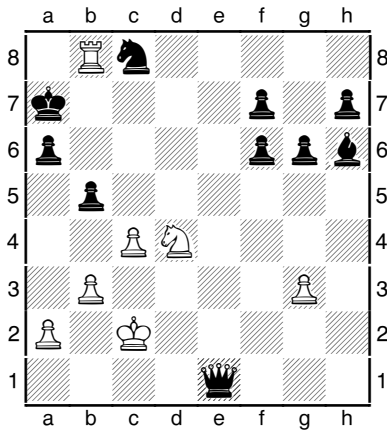


**Wir spielen eine Sprache – Schach als Beitrag zur Integration – Arbeitsblatt 2 – Quelle: Jugendschach**

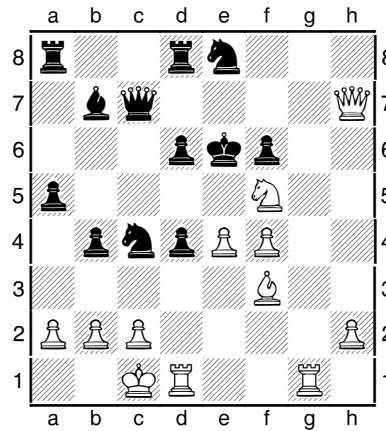
Anleiter: Egmont Pönisch  
 Ran ans Brett e.V.  
 Oskar-Mai-Straße 6  
 01129 Dresden

Telefon: 0176/61561268  
 E-Mail: kontakt@ran-ans-brett.de

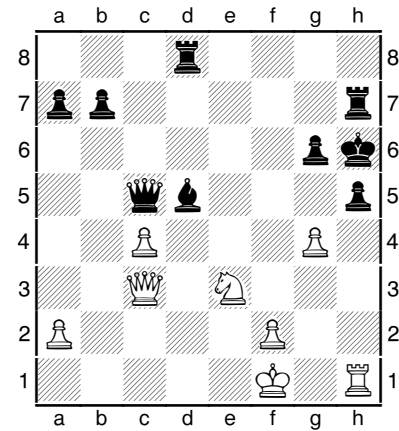
**jeweils Weiß am Zug**



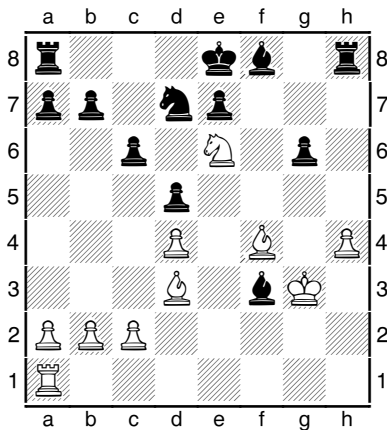
**I. Matt in 1 Zug**  
 1. \_\_\_\_\_



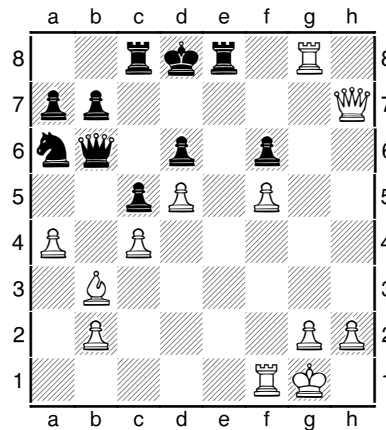
**IV. Matt in 1 Zug**  
 1. \_\_\_\_\_



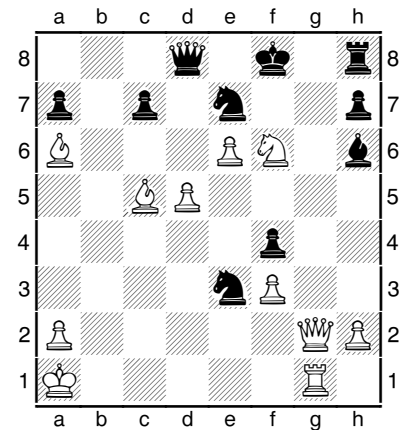
**VII. Matt in 2 Zügen**  
 1. \_\_\_\_\_  
 2. \_\_\_\_\_



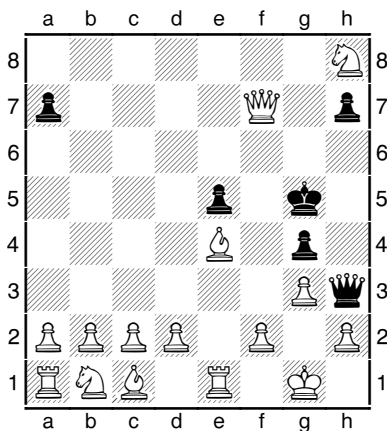
**II. Matt in 1 Zug**  
 1. \_\_\_\_\_



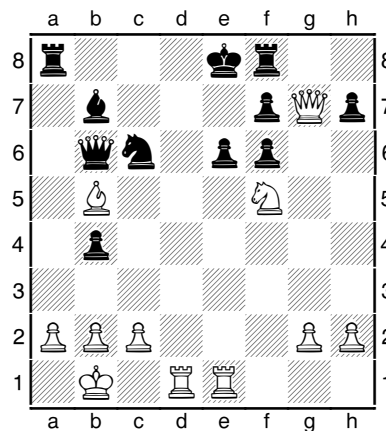
**V. Matt in 2 Zügen**  
 1. \_\_\_\_\_  
 2. \_\_\_\_\_



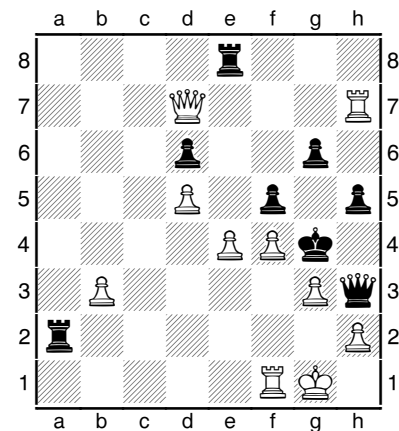
**VIII. Matt in 2 Zügen**  
 1. \_\_\_\_\_  
 2. \_\_\_\_\_



**III. Matt in 1 Zug**  
 1. \_\_\_\_\_



**VI. Matt in 2 Zügen**  
 1. \_\_\_\_\_  
 2. \_\_\_\_\_



**IX. Matt in 2 Zügen**  
 1. \_\_\_\_\_  
 2. \_\_\_\_\_